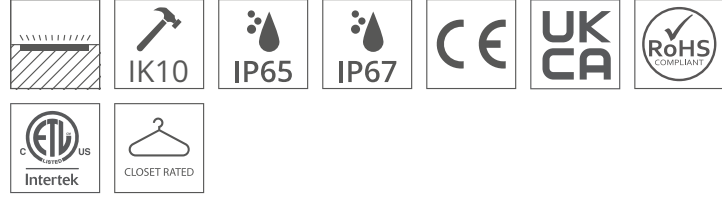
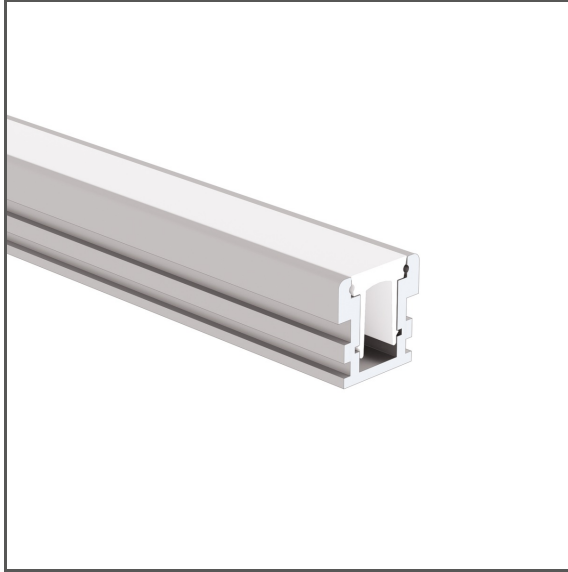


HR-LINE Extrusion

Ref. A03579



- For indoor | outdoor ground installation
- Designed for IP67 and IK10 protection ratings

APPLICATION

- warning and decorative lighting

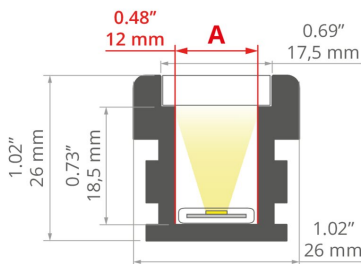
MOUNTING

- in the ground, with mounting adhesive

ADDITIONAL INFORMATION

- standard lengths of KLUŠ profiles and covers: 1000 mm (tolerance ± 1.5 mm) and 2005 mm / 3010 mm (tolerance + 5 mm); for selected covers: 6050 mm, 10050 mm (tolerance + 5 mm)
- when choosing a different length of profiles / covers than available in the standard, you should additionally choose the cutting service at KLUŠ

TECHNICAL DRAWING



TECHNICAL SPECIFICATIONS

Material	aluminum
Color	■ silver non anodized
Possible fixture IP	65, 67
Possible fixture shapes	linear
Profile cross-section	rectangular
Width	1"
Height	1"
LED gluing width A	0.5"
Number of LED strips A (0.31" wide)	1
Width of the glow	18 mm
Max power of a single KLUŠ LED strip	9.6 W/m
Impact protection IK10	yes
Possibility of obtaining a line of light	yes
Building type	Outdoor, Commercial, Retail, Hotel / Restaurant
Facility zone	communication routes and corridors, driveways, parking lot and garage, entrances and gates

Length	Ref
39.4"	A03579N_1
78.9"	A03579N_2
118.5"	A03579N_3

HR-LINE Extrusion

Ref. A03579

The cover is cut to the length of the profile	yes
Wire out end cap	yes
Wire out back of extrusion	yes



SAMPLE PROJECTS



RELATED ACCESSORIES > COVERS

NAME		MATERIAL	MATERIAL TRANSMITTANCE	COLOR	REF.
HR		PC	38 %	frosted	B17151F
HR-LINE		PC	45 %	frosted	B17207F

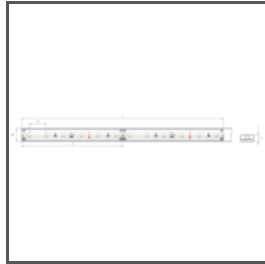
RELATED ACCESSORIES > END CAPS

NAME		MATERIAL	COLOR	REF.
HR-LINE		PP	gray	C20125C02
HR-LINE-OTW		PP	gray	C20125C02TW
HR-LINE-STN		stainless steel	steel	C24199N00

RELATED ACCESSORIES > RELATED LED > CRI 90+



WP-K-1210-12V
KWP-1210-12



KWP-1210-24
KWP-1210-24

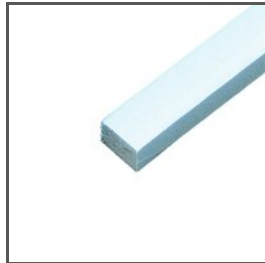


KWP-1220-IP65-24
KWP-1220-IP65-24

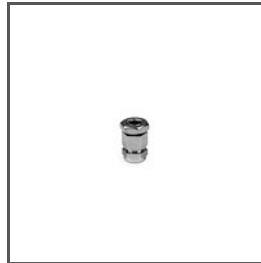
RELATED ACCESSORIES > OTHER ACCESSORIES > ADDITIONAL ITEMS



HERMETIC COUPLER
C28239C02



PAD
HR-LINE
C24507C02



GLAND
M8x1
C42265N00