

Connector ZM-60-G

Ref. 42304



- Possibility to manually adjust the sections of the profile to be joined

APPLICATION

- connecting lighting fixtures into runs at an angle of 60 degrees

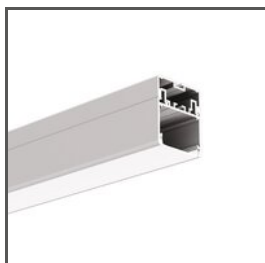
MOUNTING

- to the profile, with a small lock and pressure screws (included)

TECHNICAL SPECIFICATIONS

Material	stainless steel	Thickness	1.5 mm
Color	■ silver		

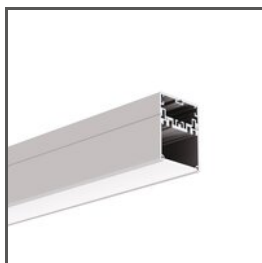
RELATED PROFILES > ARCHITECTURAL



3035
A18039
Ref. arch 18039



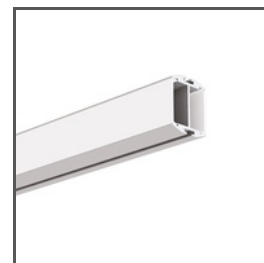
3035-O
A08441
Ref. arch B8441



4050
A18050
Ref. arch 18050



4050-W
A18051
Ref. arch 18051



GIZA-DUO-LL
A02162
Ref. arch C2162



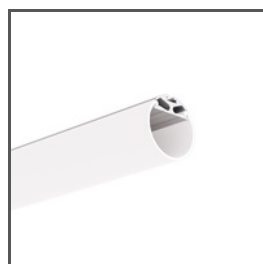
GIZA-LL
A00758
Ref. arch C0758



GLAZA-DUO
A03059
Ref. arch C3059



GLAZA-LL
A02627
Ref. arch C2627



JAZ
A08547
Ref. arch B8547



KOPRO-30
A07890
Ref. arch B7890



OPAC-30
A06164
Ref. arch B6164



OPK-4
A00370
Ref. arch C0370

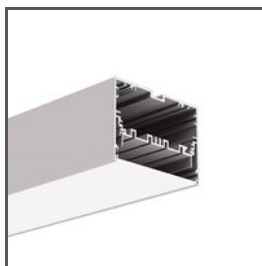
RELATED PROFILES > FOR MAIN LIGHTING



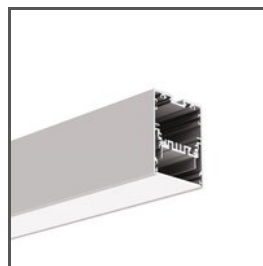
LARKO-50
A00756
Ref. arch C0756



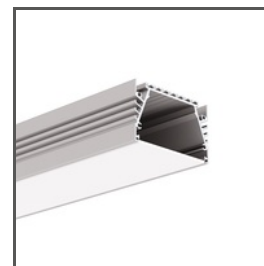
LIPOD-50
A02609
Ref. arch C2609



MOD-100
A18049A
Ref. arch 18049



MOD-50
A18047
Ref. arch 18047



SEPOD
A06593
Ref. arch B6593

RELATED PROFILES > MINIMALISTIC



PIKO-ZM
A01168
Ref. arch C1168

RELATED PROFILES > MOUNTING TRACKS

Connector ZM-60-G

Ref. 42304



RAM-KOL-100
A18062
Ref. arch 18062



RAM-KOL-50
A18060
Ref. arch 18060

RELATED PROFILES > UNIVERSAL



OLEK
A08505
Ref. arch B8505

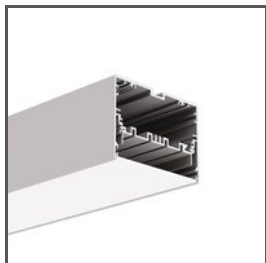


PDS-ZM-PLUS
A02056
Ref. arch C2056

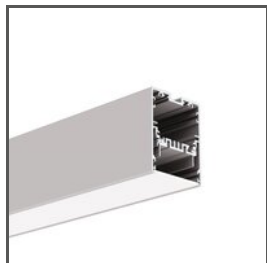


PDS-ZMG
A01418
Ref. arch C1418

RELATED SYSTEMS > GENERAL LIGHTING SYSTEMS



MOD-100
18049



MOD-50
18047



MOD-KOL-100
A18062+A18058
Ref. arch 18062+18058



MOD-KOL-50
A18053+A18060
Ref. arch 18060+18053



PK-4
A18044+A00370
Ref. arch 18044+C0370