

# Connector ZM-X45-G

Ref. 42330



- Possibility to manually adjust the sections of the profile to be joined

## APPLICATION

- crossing lighting fixtures at an angle of 45 degrees

## MOUNTING

- to the profile, with a small lock and pressure screws (included)

## TECHNICAL SPECIFICATIONS

Material	stainless steel	Color	■ silver
----------	-----------------	-------	----------

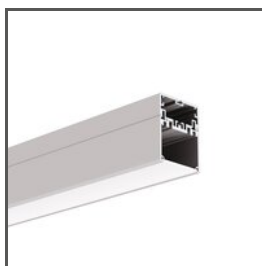
## RELATED PROFILES > ARCHITECTURAL



**3035**  
A18039  
Ref. arch 18039



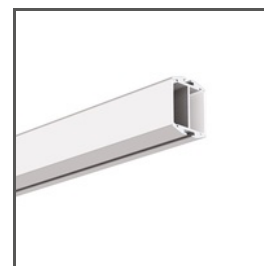
**3035-O**  
A08441  
Ref. arch B8441



**4050**  
A18050  
Ref. arch 18050



**4050-W**  
A18051  
Ref. arch 18051



**GIZA-DUO-LL**  
A02162  
Ref. arch C2162



**GIZA-LL**  
A00758  
Ref. arch C0758



**JAZ**  
A08547  
Ref. arch B8547



**OPAC-30**  
A06164  
Ref. arch B6164



**OPK-4**  
A00370  
Ref. arch C0370

## RELATED PROFILES > FOR MAIN LIGHTING



**LARKO-50**  
A00756  
Ref. arch C0756

---

## RELATED PROFILES > MINIMALISTIC



**PIKO-ZM**  
A01168  
Ref. arch C1168

---

## RELATED PROFILES > UNIVERSAL



**OLEK**  
A08505  
Ref. arch B8505



**PDS-ZM-PLUS**  
A02056  
Ref. arch C2056

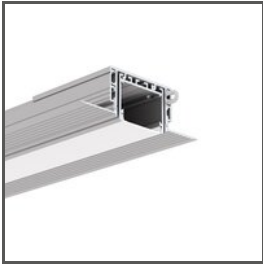


**PDS-ZMG**  
A01418  
Ref. arch C1418

# Connector ZM-X45-G

Ref. 42330

## RELATED SYSTEMS > GENERAL LIGHTING SYSTEMS



**3035-KOZE**  
A08441+A18056  
Ref. arch 18056+B8441



**PK-4**  
A18044+A00370  
Ref. arch 18044+C0370